

aminex plc

AGM PRESENTATION

10 June 2009



1. CORPORATE SUMMARY



OIL & GAS EXPLORATION – DEVELOPMENT - PRODUCTION

- **PRODUCTION OF OIL & GAS IN TEXAS & LOUISIANA**
- **DEVELOPMENT & APPRAISAL PROGRAMMES IN TANZANIA & USA**
- **HIGH IMPACT EXPLORATION IN AFRICA WITH EARLY DRILLING PLANNED IN TANZANIA & EGYPT**
 - *Lower risk production in the USA balanced with high impact exploration*
 - *Frontier drilling in Tanzania has now been rewarded*
 - *Further exploration and development potential in existing U.S. properties*



RECENT HISTORY

Aminex has participated in 6 new wells over the last two years, of which 3 were commercial discoveries.

- Kiliwani North-1 (Nyuni PSA, Tanzania, 40% interest, operated by Aminex) tested gas at 40 mmscfd gas (6,700 bbls oil equivalent).
- Sunny Ernst-2 (Galveston County, Texas, 37.5% interest, operated by El Paso Corporation) tested 6 mmscfd gas and 300 bbls oil/day (1,300 bbls oil equivalent).
- SWGU-39 (South Weslaco, Texas, 25% interest, operated by Kaler Inc.) drilled & logged but not yet completed for production.



Songo-Songo Island, Tanzania



UPCOMING ACTIVITY

SIGNIFICANT NEW WELL IN THE RUVUMA BASIN, TANZANIA

Aminex will spud Mikindani-1, its first well in the Tanzanian sector of the prospective Ruvuma Basin, in Q3 2009. Aminex is in 50-50 partnership with Tullow Oil.

APPRAISING & DEVELOPING THE KILIWANI NORTH-1 DISCOVERY, TANZANIA

Appraisal seismic will commence in June 2009 to define the extent of the KN-1 discovery. Commercialisation negotiations are in progress. Other exploration prospects under evaluation on the same licence.

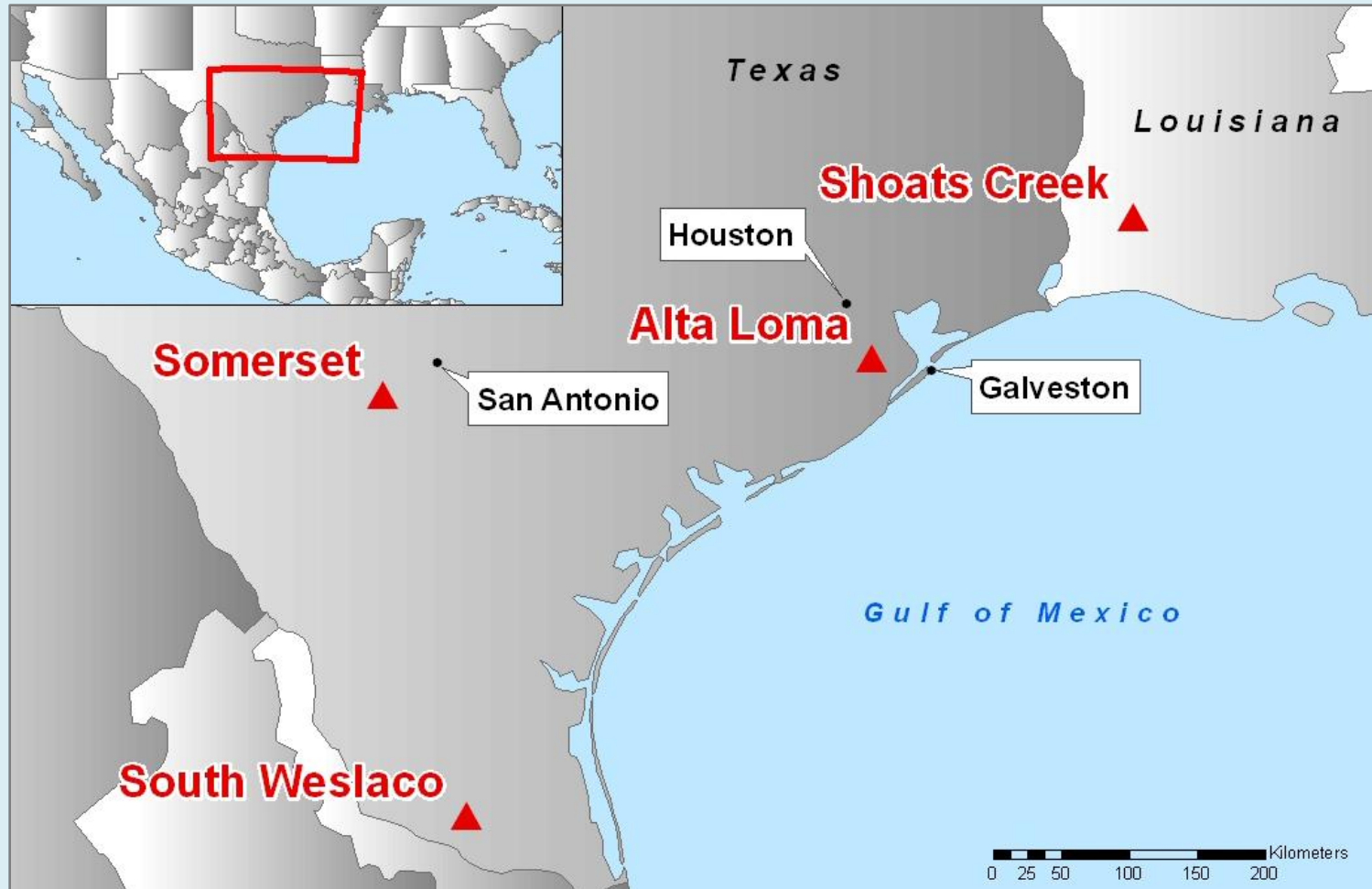
DEVELOPMENT DRILLING FOR DEEP GAS AT ALTA LOMA, TEXAS

The Sunny Ernst-2 well at Alta Loma, Galveston County, Texas encountered five separate gas-bearing sands and is now on stream from one zone. The largest zone encountered, 60 feet net pay in the “S” Sand, will be dual-completed. Sunny Ernst-3 is provisionally planned for drilling in early 2010.

DEVELOPMENT OF SHOATS CREEK, LOUISIANA

Based on new 3D seismic, early field redevelopment is planned. Shoats Creek was independently valued at \$95 million on a 2P basis in December 2008. Seismic indicates deep untested potential in the Wilcox formation. Negotiations with potential industry partners are in progress.

2. AMINEX'S OPERATIONS IN THE USA



USA



INDEPENDENTLY APPRAISED RESERVES AT 31 DEC. 2008

Asset	Working Interest WI	Reserves Category	Net Oil mmb	Net Gas bcf	Net Oil & Gas mmboe (6:1)	NPV ¹⁰ (net) (mm\$)
Alta Loma, Texas	37.5%	1P	0.35	8.7	1.8	39.9
		2P	0.35	8.7	1.8	39.9
Shoats Creek (op), Louisiana	100%	1P	0.02	0.2	0.05	0.9
		2P	1.74	16.7	4.5	95.4
S. Weslaco, Texas	25%	1P	0.004	2.2	0.37	6.8
		2P	0.004	2.5	0.42	7.6
Somerset (op), Texas	100%	0	0	0	0	-1.0
Totals		1P	0.37	11.1	2.2	46.6
		2P	2.1	27.9	6.8	142.9

USA



ALTA LOMA, GALVESTON COUNTY, TEXAS

SUNNY ERNST-2 DISCOVERY

- Operated by El Paso Corporation. Aminex has 37.5% interest.
- Drilled to 14,900' and encountered multiple sands.
- 2 of 5 zones tested. Upper Andrau now on production at 4.5 mmscfd and 250 bopd.
- Careful planning in progress for a dual completion to enable simultaneous production from the 60' "S" sand which has not yet been perforated and the Upper Andrau formation which is already producing.
- Sunny Ernst-2 is the most successful well ever drilled by Aminex in the USA.
- Provisional budget for drilling a follow-up well in early 2010.

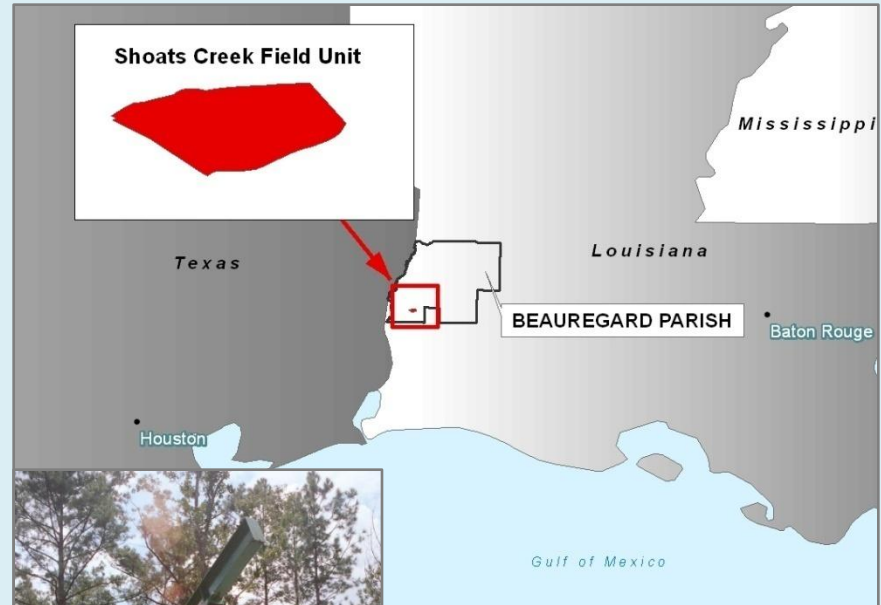


USA

SHOATS CREEK OIL & GAS FIELD, LOUISIANA



- Mature oil & gas field which was first drilled in the 1920s.
- 20 well bores of which 2 currently produce around 40 bopd.
- High potential for redevelopment.
- At end 2008, Shoats Creek was valued at \$95 million on 2P basis.
- New 3D seismic indicates deeper untapped potential in the Wilcox formation.
- Development plan currently being prepared.
- Discussions ongoing with potential development partners.



USA

SOMERSET FIELD & SOUTH WESLACO, TEXAS



SOMERSET FIELD, SAN ANTONIO

- The Somerset leases are south of San Antonio, Texas.
- Multiple shallow stripper wells.
- Somerset provides reliable income flows.
- Deeper exploration leads near existing production now being evaluated.

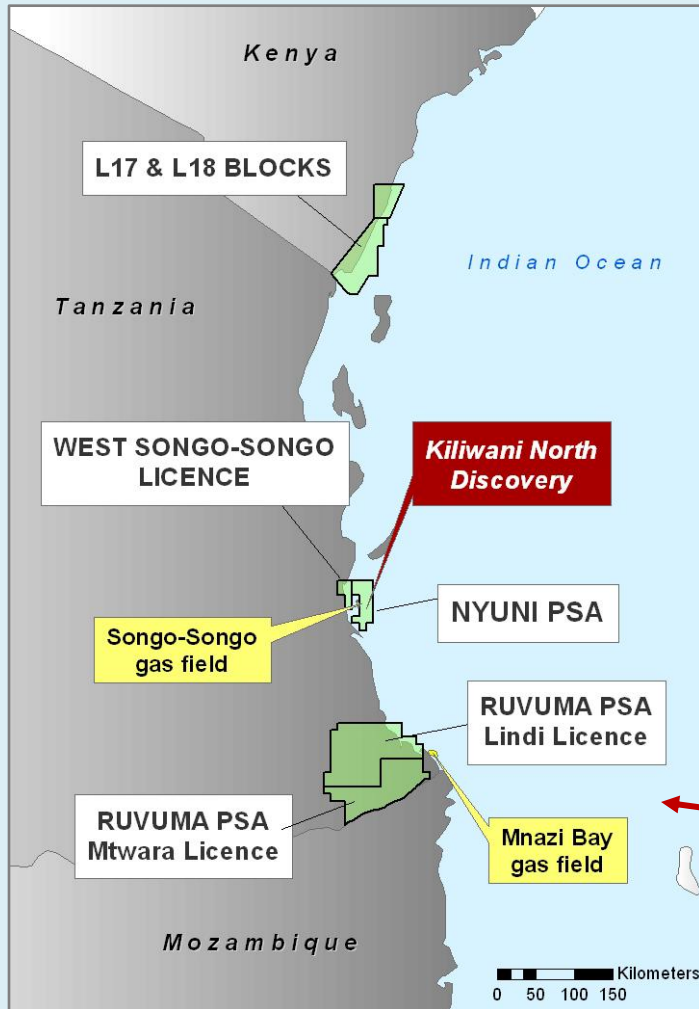
SOUTH WESLACO, HIDALGO COUNTY

- Aminex has drilled 5 successful gas wells in South Weslaco.
- Current gross production averages 3 mmscfd.
- Aminex has a 25% interest.
- Possible candidate for disposal.



South Weslaco GU-35 wellhead

3. EAST AFRICA COASTAL MARGIN AND ONSHORE GULF OF SUEZ





Tanzania	1. Nyuni PSA <i>Kiliwani N appraisal</i> 1,400 km ²	Aminex RAK Gas Key EAX Bounty	40% (operator) 25% 20% 10% 5%
	2. West Songo-Songo 500 km ²	Aminex Key	50% 50% (operator)
	3. Ruvuma Basin <i>(Lindi & Mtwara)</i> 12,000 km ²	Aminex Tullow	50% 50% (operator)
Kenya	Blocks L17 & L18 5,000 km ²	Aminex EAX SomKen	25% (operator) 40% 35%
Egypt	WEEM Block 2 1,300km ²	Aminex Pet. (Egypt) Ltd Groundstar (Aminex has a beneficial 10% carried interest in WEEM-2)	80% (operator) 20%

“Key” – Key Petroleum Ltd., ASX quoted company
 “RAK Gas” – Ras al Khaimah Gas Commission
 “EAX” – East African Exploration Ltd., Dubai company
 “Tullow” – Tullow Oil, London Full-list oil and gas co.

“Bounty” – Bounty Oil & Gas NL Ltd., ASX quoted company
 “SomKen” – SomKen Upstream Ltd, Kenyan commodity trading group
 “Groundstar” – Groundstar Resources Ltd, Canadian TSX co.

TANZANIA



1. NYUNI APPRAISAL & DEVELOPMENT LICENCE

- Kiliwani North-1 on the Nyuni PSA was drilled to a total depth of 2,032 metres in 1H 2008.
- It encountered a 60 metre gross gas column and flowed pipeline quality gas with no impurities under production test conditions at the rate of 40 mmscfd. (6,700 boe/day)
- Wellhead is close to the only major gas pipeline in the region and the PSA permits pipeline access.
- An appraisal licence has been agreed with the Government of Tanzania.
- Further seismic survey commencing June 2009 over Kiliwani North aimed at better delineation of discovery.
- Commercialisation and development plans are in progress.

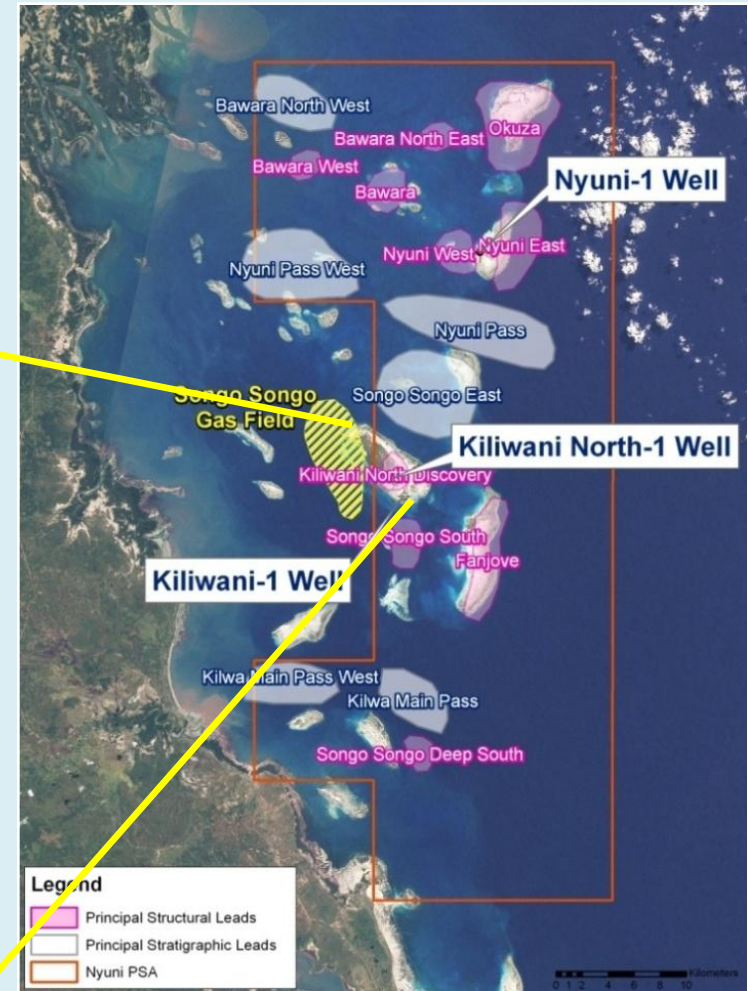


TANZANIA



1. NYUNI EXPLORATION LICENCE

- There are a number of other prospects in the Nyuni PSA area defined by seismic.



TANZANIA



1. SUMMARY OF NYUNI PROSPECT SIZES

Nyuni Structural Leads P50 mean, unrisksed, GIIP				
Lead Name	Neocomian Structural Leads only		Structural Leads at all levels (Neocomian, Aptian-Albian, Top Cretaceous, Base Eocene)	
	Gas Bcf (GIIP)	Oil MMboe	Total Gas Bcf (GIIP)	Total Oil MMboe
Songo Songo South	37	6	54	9
Fanjove	275	46	358	60
Nyuni West	15	3	830	138
Nyuni East	57	10		
Okuza	320	53	103	18
Others	69	12		
Kiliwani North discovery	Under appraisal		Under appraisal	
Total	773	130	1,345	225

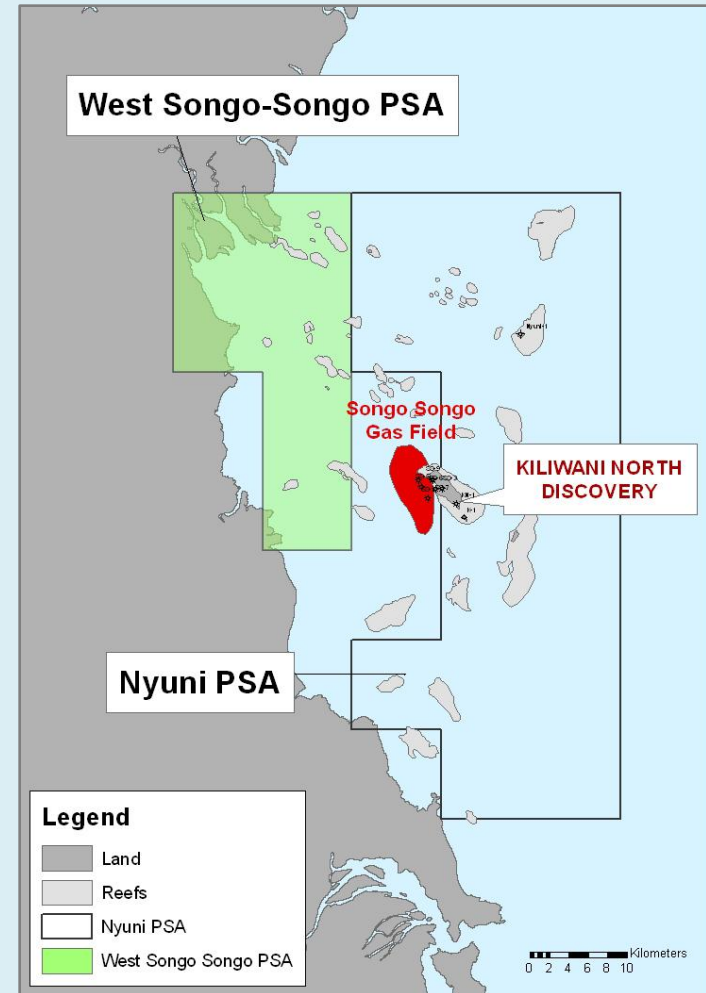
Volumetrics are as evaluated by ISIS Petroleum Consultants

TANZANIA



2. WEST SONGO-SONGO EXPLORATION

- New acreage awarded in Tanzania in 2008.
- Adjacent to Songo-Songo producing gas field and to the Aminex Nyuni Licence.
- PSA is 504 km² and has recent seismic coverage.
- 50-50 JV with Key Petroleum Ltd.
- Excellent further potential in Lower Cretaceous play fairway.
- Preliminary volumetrics show potential resource of 735 mmbo or 1.3 tcf gas.

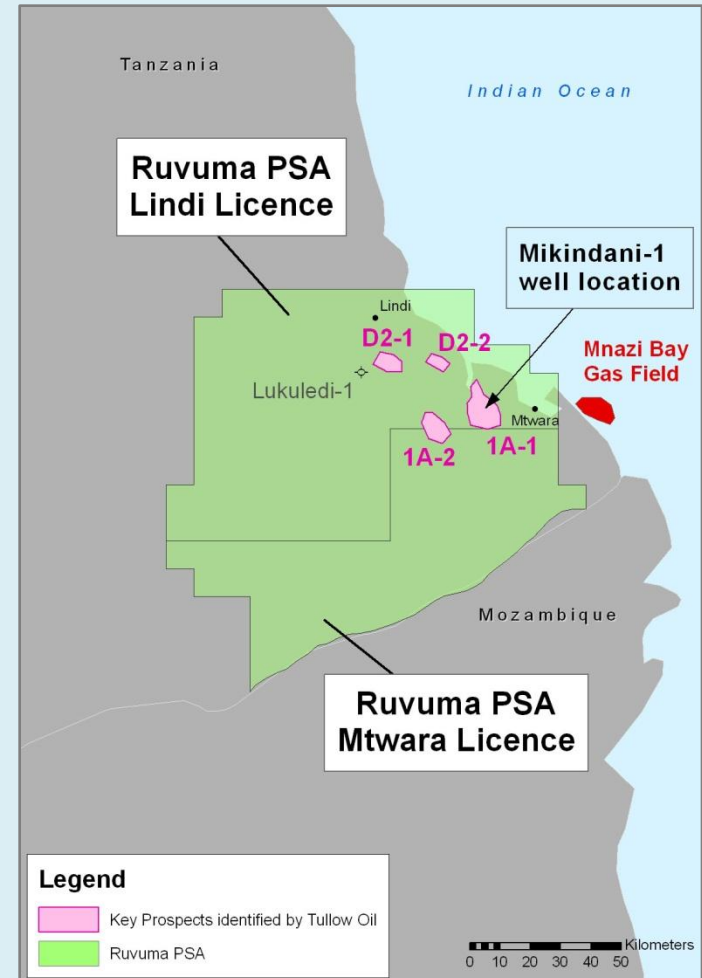


TANZANIA



3. RUVUMA BASIN EXPLORATION

- Aminex and Tullow Oil are 50-50 partners in a 12,000 km² PSA in the Ruvuma Basin.
- The combined licences are 80% onshore and 20% offshore. New seismic, onshore and marine, has been acquired and interpreted.
- The Ruvuma River is the border between Tanzania and Mozambique.
- Anadarko is committed to drill seven wells on the Mozambique side of the basin commencing 2009.
- Anadarko has described the Ruvuma Basin as a *look-alike* of the Gulf of Mexico or the Niger Delta.
- A working petroleum system has already been well-established by the producing Mnazi Bay gas field at the mouth of the Ruvuma River.
- Texaco drilled an obligation well in the Aminex-Tullow acreage in 1990 based on limited data and found traces of crude oil before exiting the country at a time of weak oil prices.



TANZANIA

3. RUVUMA DRILLING PROGRAMME



- Tanzania is well known for gas but Aminex's Ruvuma play is aiming for oil.
- Having completed seismic, the Aminex and Tullow JV is preparing to drill its first Ruvuma exploration well, *Mikindani-1*.
- Tullow Oil, one of the most successful exploration companies in Africa, is operator of the well.
- Spud date will be in 3Q 2009, offering investors early drilling activity.
- **This is Aminex's next firm well and one of the most significant in the Company's history.**
- The targets for the first well are Lower Tertiary and Cretaceous reservoir sands with possible deepening into the Karoo sands.
- The Mikindani prospect alone has the potential to contain 147 mm bbls of recoverable oil or approximately 1 tcf of gas.



The well site at Mikindani-1 has now been prepared

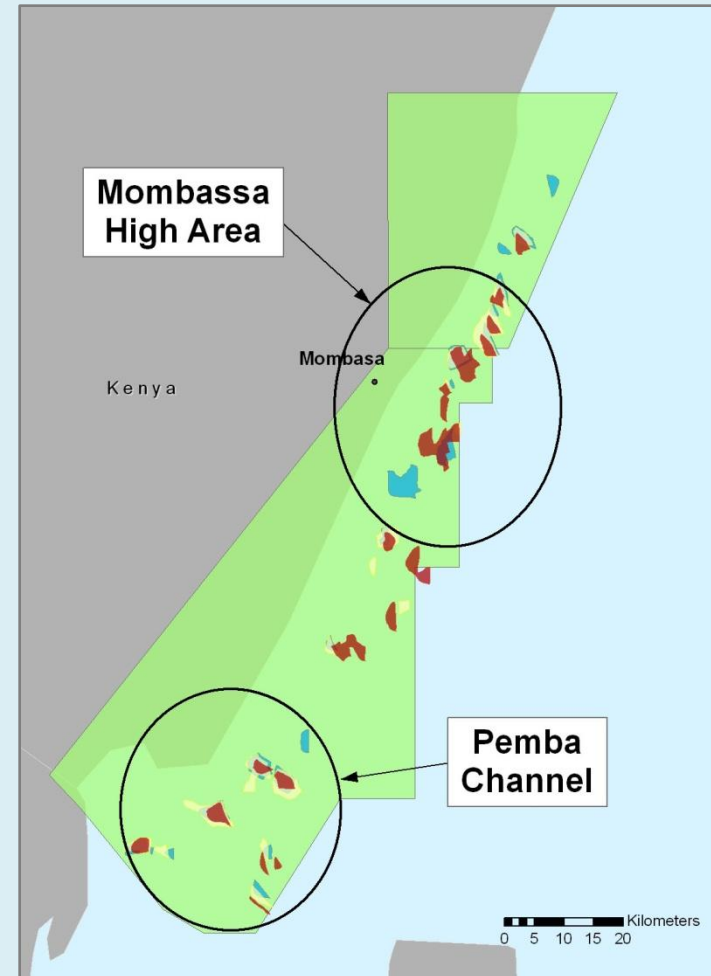
- There is additional potential in the deeper Karoo formation.

KENYA



NEAR SHORE BLOCKS, L17 & L18 PSA

- The L17 & L18 licences cover 5,000 km² along the onshore and near shore coastal margin of southern Kenya.
- Aminex is operator (25%), with partners East African Exploration Ltd (40%), and SomKen Ltd (35%).
- 700km of 2D seismic has already been acquired and further seismic is planned for late 2009.
- There is no drilling commitment within the current exploration period.
- A number of offshore leads have been identified from an evaluation of existing seismic by ISIS Petroleum Consultants.

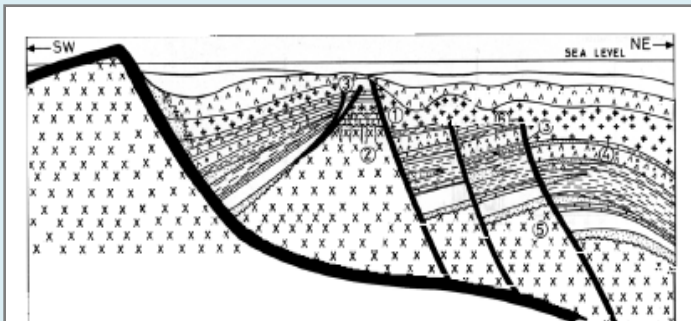
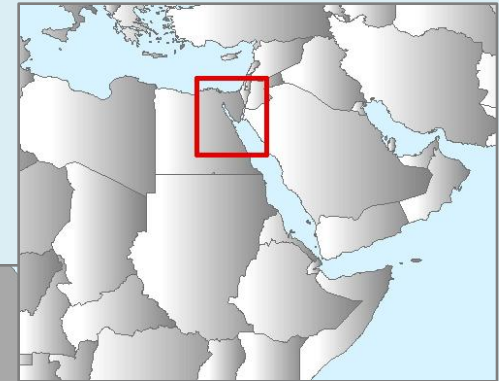


EGYPT

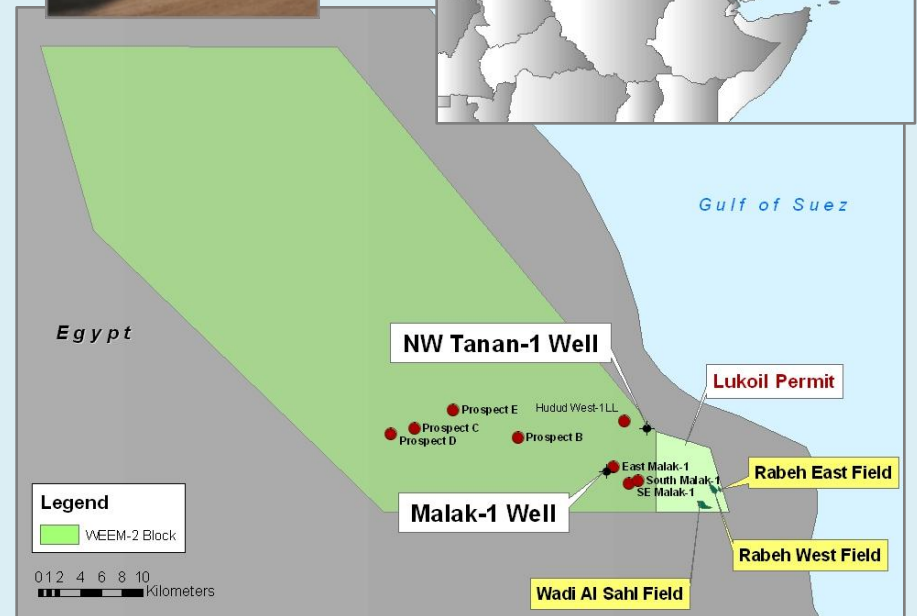
ONSHORE GULF OF SUEZ

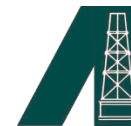


- Aminex Petroleum Egypt Ltd. holds the West Esh El Mellaha-2 concession in the Eastern Desert of Egypt.
- Aminex is free-carried for 10% through to commercial production.
- One or more exploration wells will be drilled in 2009 (timing not yet firm) post a current re-evaluation of the licence using 3D seismic and aeromagnetic data.



Generalised South West to North East cross section through the licence block illustrating structural play types. The licence is immediately NW to the producing Rabeh East & Wadi Al Sahl Fields





FORWARD ACTIVITY CHART

	Q2 09	Q3 09	Q4 09	2010	2011	NEW WELLS
NYUNI (Tanzania)						
Seismic to define KN discovery						
Seismic to firm up exploration well locations						
Exploration/development drilling					2	2
RUVUMA (Tanzania)						
Partial farm-out of interest						
Firm exploration well		1				1
Conditional exploration well				1		1
W SONGO-SONGO (Tanzania)						
Acquire new seismic						
Drill 1 well					1	1
L17 & L18 (Kenya)						
Acquire new seismic						
WEST ESH EL MELLAHA-2 (Egypt)						
Firm exploration well		1				1
Conditional exploration well				1		1
ALTA LOMA (Texas)						
Drill SE-3				1		1
SHOATS CREEK (Louisiana)						
Complete 3D interpretation						
Farm out/ commercialisation						
Drilling/ recompletions			1	3		4
WELLS PER PERIOD		2	1	6	3	12



Further information:

Brian Hall, Executive Chairman
Mike Rego, Exploration Director
Simon Butterfield, Finance Director

7 Gower Street, London WC1E 6HA
Tel: +44 207 291 3100
www.aminex-plc.com



APPENDIX



- 1. CORPORATE DATA**
- 2. SUNNY ERNST-2 WELL**
- 3. AMOSSCO**
- 4. KOREAN PENINSULA**



1. CORPORATE DATA

SHARES

- London Stock Exchange Full-List oil & gas company since 1995
- 242 million issued shares
- One class of share and all shares freely tradable

FINANCES

- Debt free balance sheet
- Revenues to fund day-to-day operations



2. USA - SUNNY ERNST-2 SCHEMATIC



WEITING SAND

Possible 1 bcf will be left behind pipe

"S" SAND

60' gas sand logged. Not yet completed & tested

UPPER ANDRAU

30' gas sand completed & tested at 1,300 boe/day

LOWER ANDRAU

Water wet sand

MASSIVE SANDS

4' already perforated. Tested 320 boe/day and suspended

TAQUARD

TD'd before reaching the Taquard sand due to lost circulation problems



3. AMOSSCO

Aminex Oilfield Service & Supply Company Ltd (“AMOSSCO”) is trading briskly in the international market with new projects under review. AMOSSCO also provides valuable logistics and procurement support to Aminex’s operations.





4. KOREAN PENINSULA

- Highly prospective for oil and gas
- Unique Petroleum Agreement
- Progress slow and politics difficult but agreement intact

