



AGM Presentation

Dublin

Wednesday 4th June 2008

AMINEX PLC

**Current Drilling Activity and
Exploration Highlights**



Exploration activity and drilling update

- Tanzania - Nyuni drilling activity summary
 - Kiliwani-1
 - Kiliwani North-1

- Egypt – West Esh El Mellaha (WEEM) drilling activity summary
 - Malak-1
 - NW Tanan-1

- Texas, USA – forthcoming drilling activity at Alta Loma

- Tanzania – Ruvuma exploration activity

- Tanzania – Nyuni ongoing exploration activity

- Tanzania - Songo Songo West – new licence award

- Kenya – L17 & L18 exploration activity

- Madagascar – Manja 3108 exploration activity

- Provisional forward plan - summary

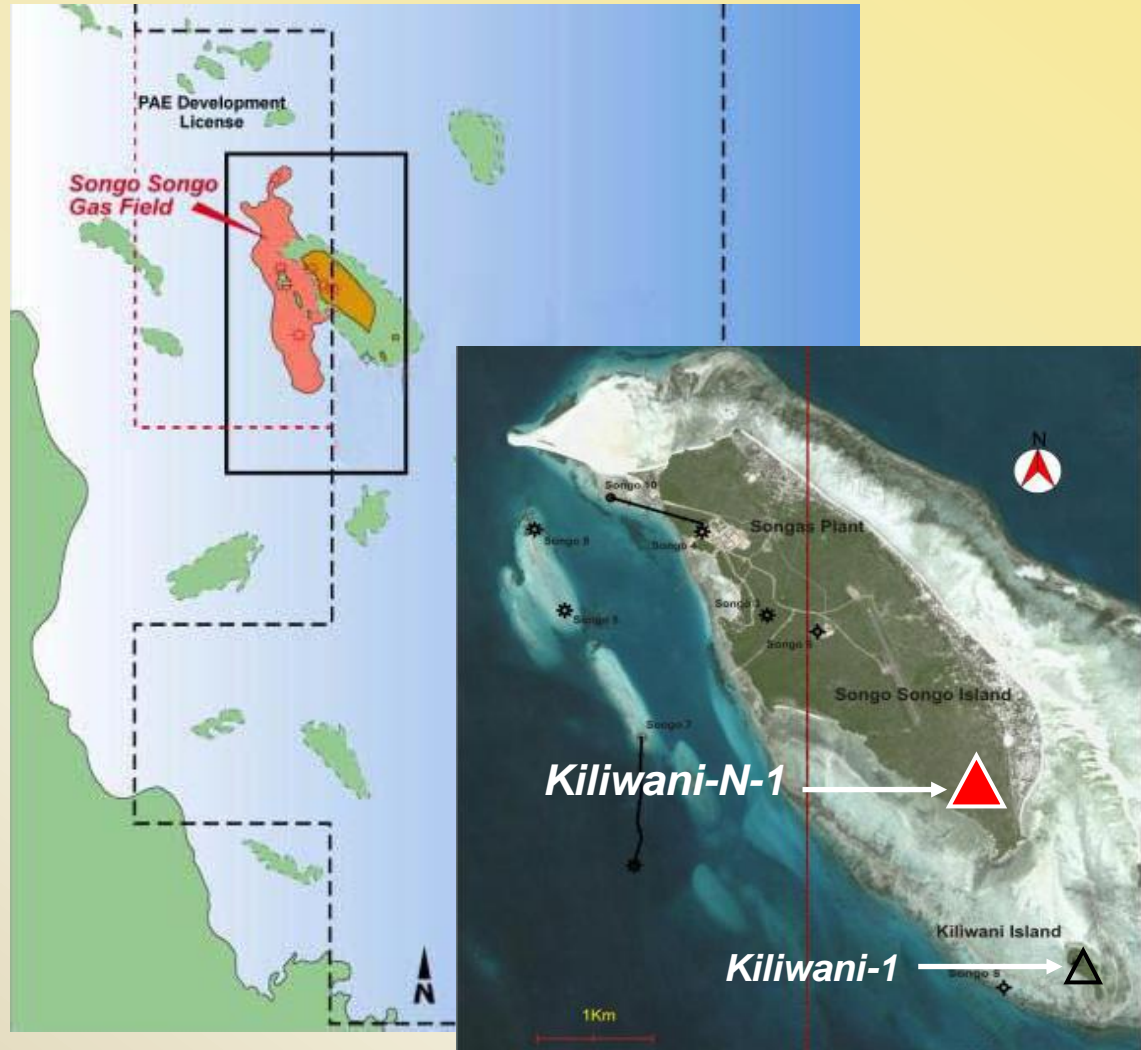
Tanzania

- Nyuni drilling activity summary

Aminex has recently drilled two wells in the Nyuni PSA:

Kiliwani-1 was drilled in late 2007/early 2008, using the Caroil-6 land rig but the oil and gas shows were uncommercial, and the well was plugged and abandoned.

Kiliwani North-1 was drilled in TD'd in February/March 2008 and a gas discovery was announced on 17th March.

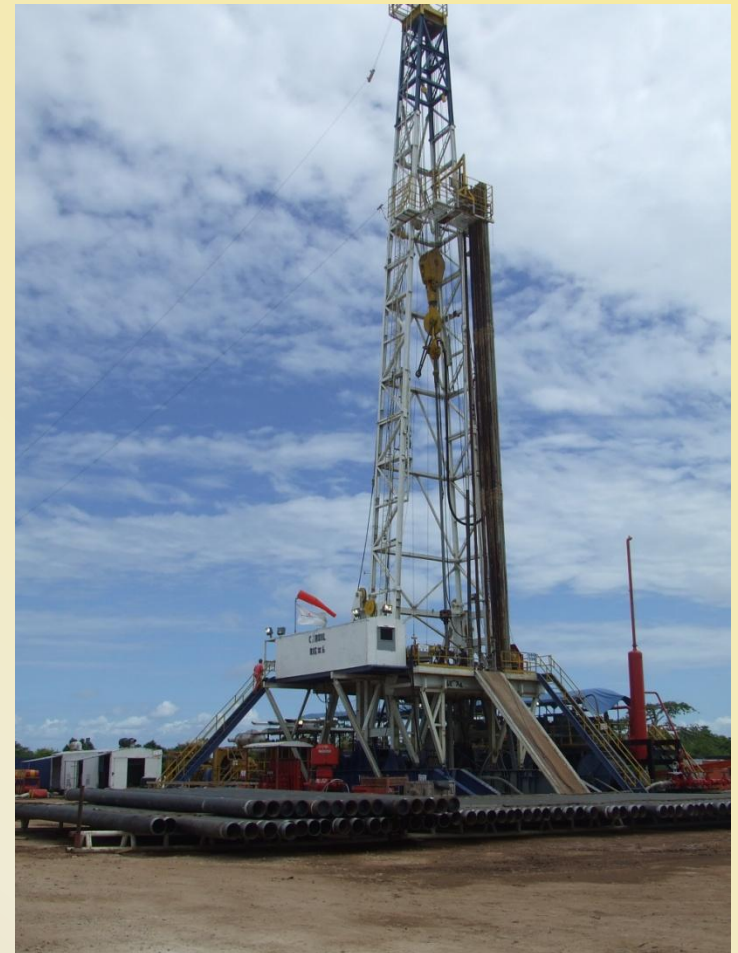


Tanzania

- Gas discovery at Nyuni !

Kiliwani North-1 was drilled as a vertical well to a TVD of 2,098m subsea (2,570m MD), and encountered a 60m gross gas column which is currently being production tested.

The Neocomian, (the primary reservoir at Songo Songo), came in gas-charged, slightly high to prognosis, but more significantly with a deeper GWC than at Songo Songo, at 1,965mSS, confirming the structure to be a separate hydrocarbon accumulation.



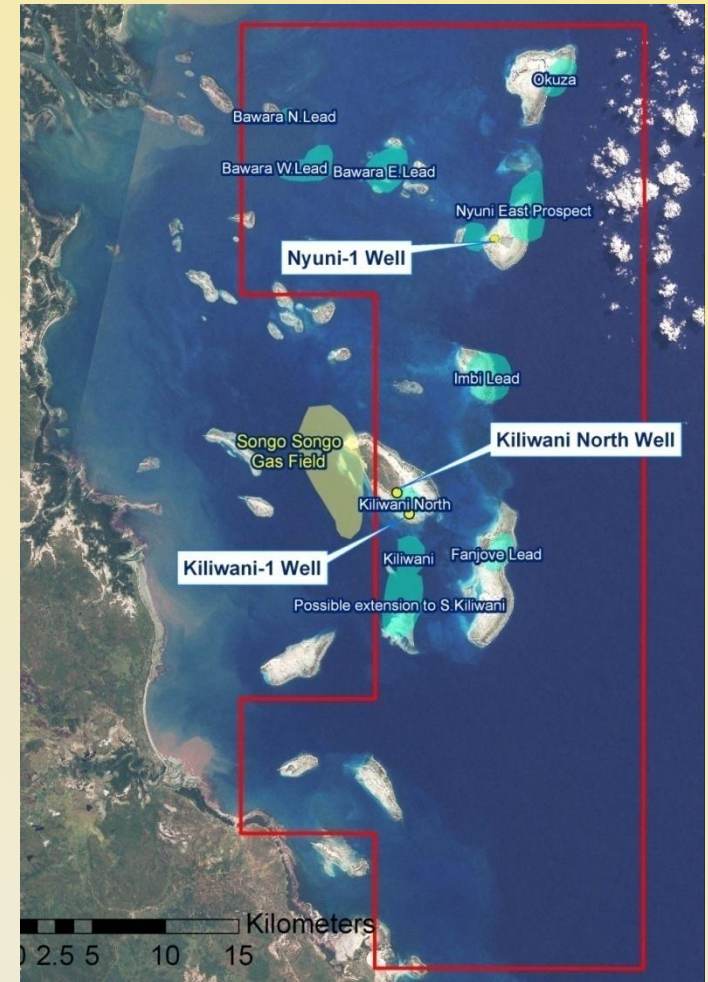
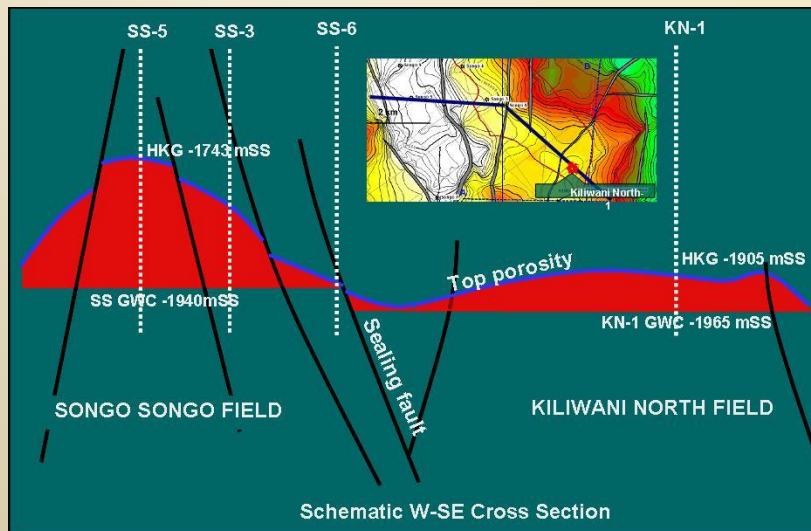


Tanzania

- Nyuni drilling activity summary

The deeper GWC at Kiliwani North-1 is particularly significant, as not only does it mean that it is a separate structure to Songo Songo gas field, but it implies:

- the presence of sealing faults, because Songo Songo gas field is not filled to spill, and
- it upgrades the various leads and prospects identified elsewhere within and around the PSA that depend upon having a deeper GWC than at Songo Songo.



Egypt

- WEEM drilling activity summary

Aminex Petroleum Egypt Ltd, is currently drilling in the West Esh El Mellaha concession, onshore in the Eastern Desert of Egypt.

Aminex is free-carried for 10% through to commercial production.

Malak-1 was spudded in late February, and reached TD of 12,116 ft in early April. The well was drilled without encountering commercial shows of oil or gas.

The second well, NW Tanan-1, was spudded in late April, and at the time of the AGM is close to TD.

The licence obligation is for the drilling minimum 3 wells.



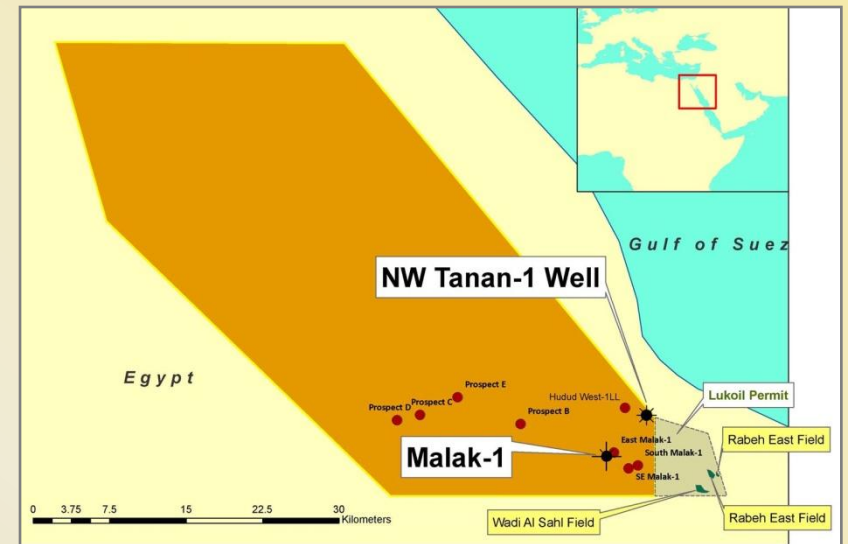
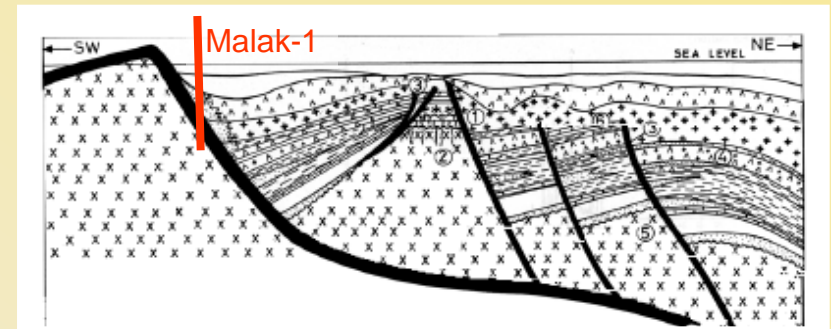
Egypt

- WEEM drilling activity summary

Regardless of the outcome of NW Tanan-1, the partners plan to assess the results of both wells before determining a location for the third commitment well.

A number of leads and prospects have been identified within the acreage, and will be re-risked in accordance with the well results to date.

The drilling rig is on contract until mid-2009.





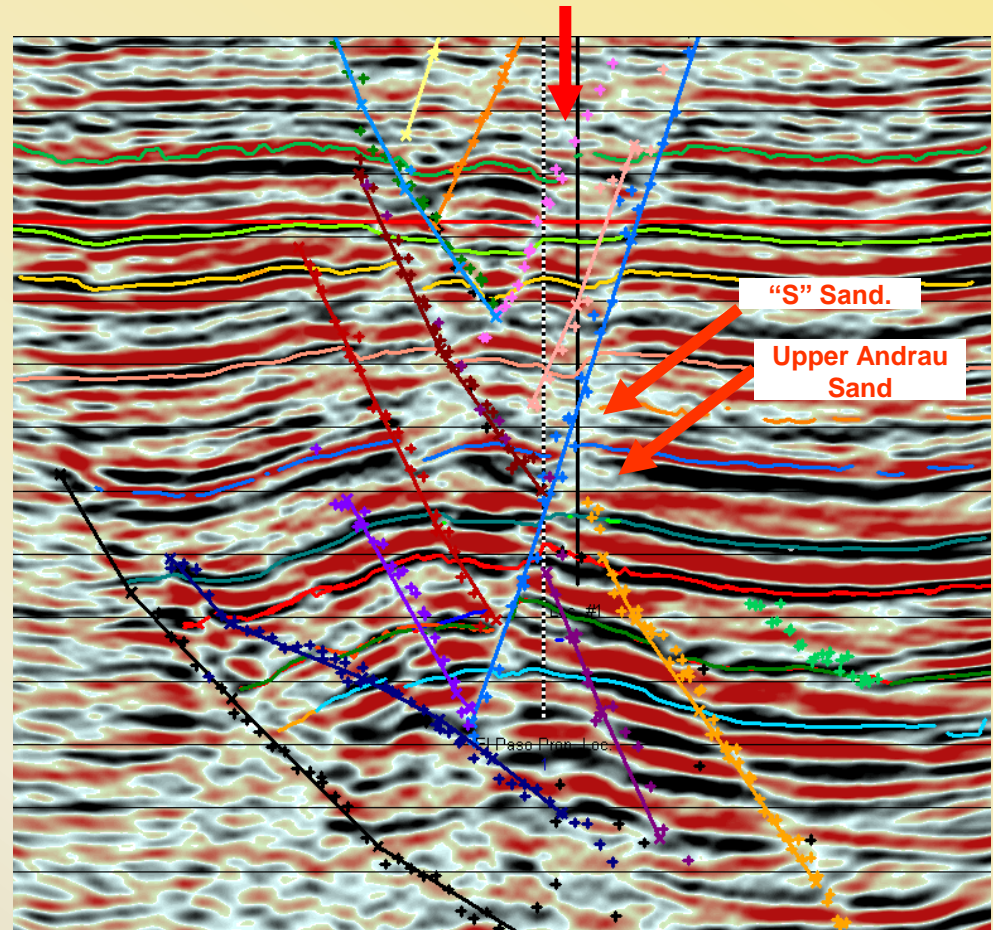
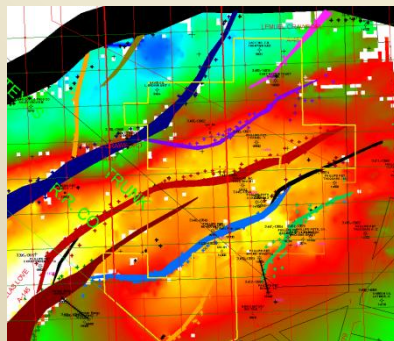
Texas

- Deep well to spud in June at Alta Loma

Alta Loma, Galveston, Texas: Currently there is one well producing gas, a further deep exploration well will be soudded imminently.

TD is planned at 15,200 ft TVD, with key objectives being the proven S Sand, Upper and Lower Andrau Sands, the Massive Sand, and the Tacquard Sand, over the interval 13,730 ft to 14,770 ft TVD.

Aminex has a working interest of 37.5%





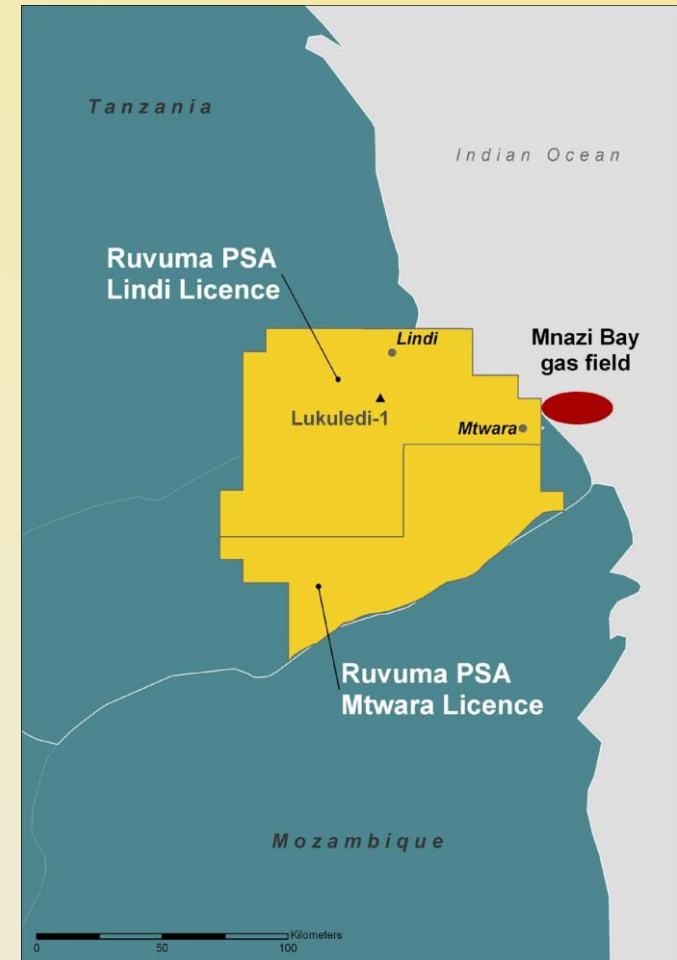
Tanzania, Ruvuma

- First well to spud in early 2009

The Ruvuma PSA is 12,000 km², and consists of two licence areas, *Lindi* and *Mtwara*, each with a single exploration well commitment by end-2009.

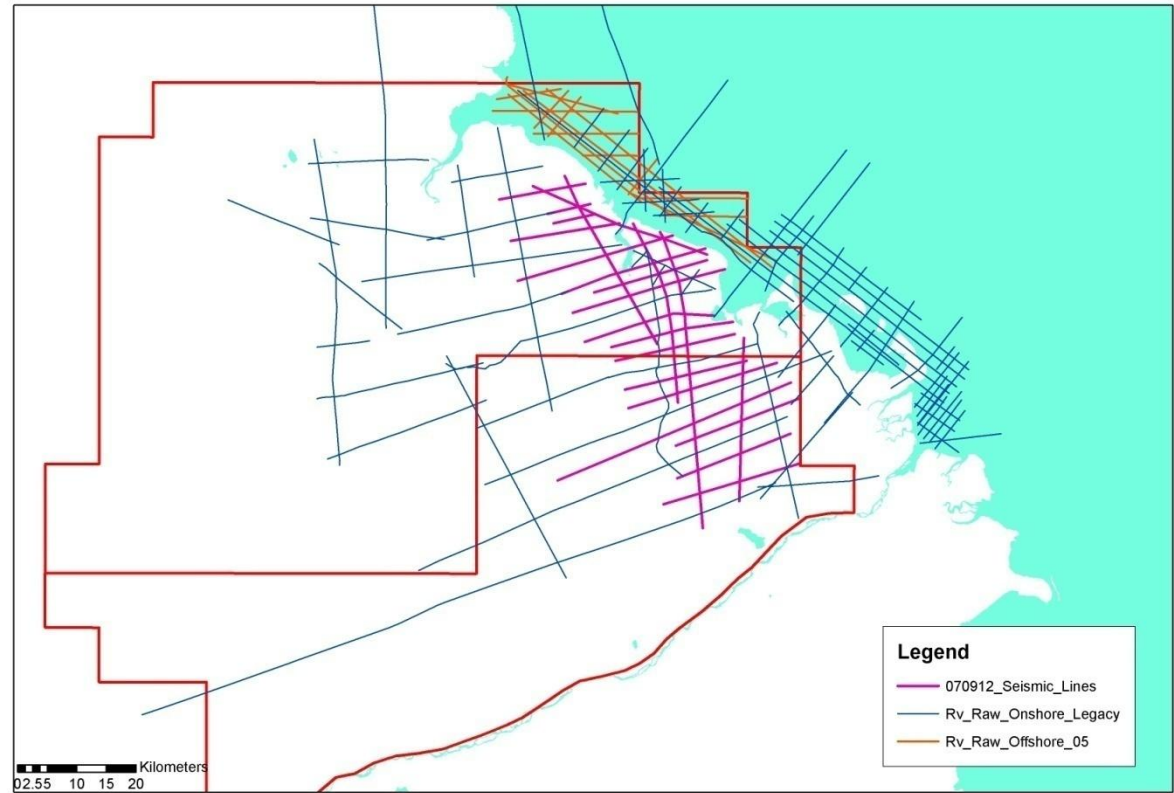
Tullow Oil will be the Operator for the drilling phase.

The drilling campaign is due to begin early 2009.



Tanzania

- Ruvuma exploration activity



Scale: 1: 700,000

2 June 2008



Tanzania, Songo Songo West - New Licence Award !

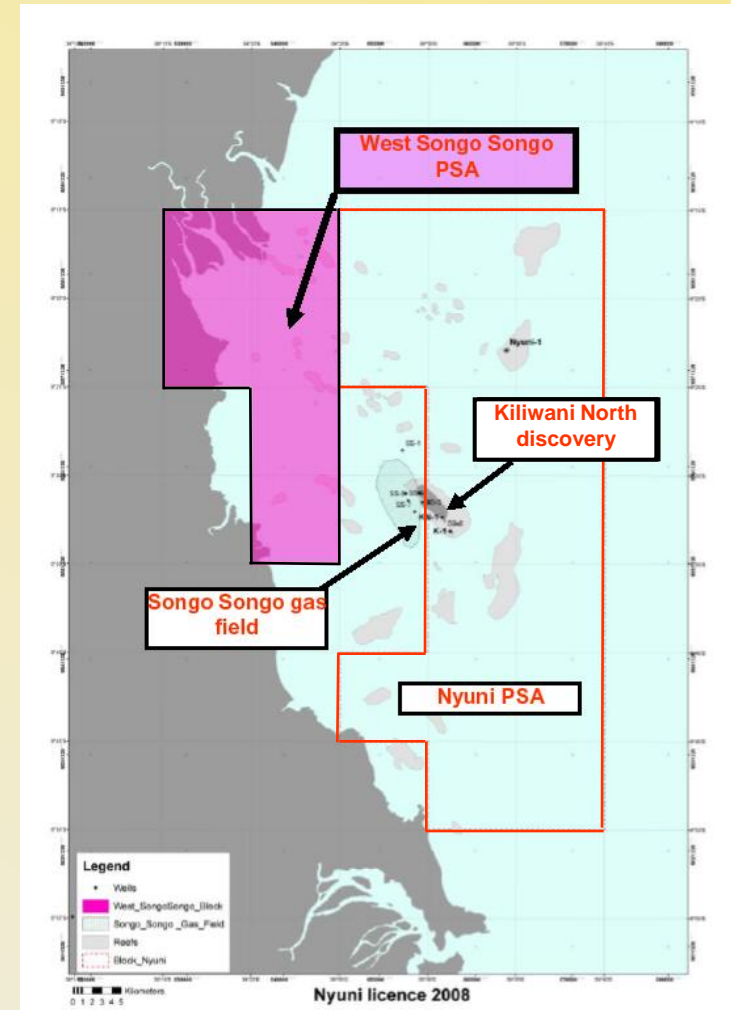
On 2nd June, Aminex announced the award of the Songo Songo West PSA in Tanzania.

The Songo Songo West PSA is offshore shallow marine, adjacent to the western boundary of the producing Songo Songo gas field and to Aminex's Nyuni PSA, and east of the recent Mukuranga gas discovery.

The PSA is 504 km² and has comprehensive and recent 2D seismic coverage.

The exploration term is for a total of 11 years, with an obligation to drill one exploration well in the initial 3-year period.

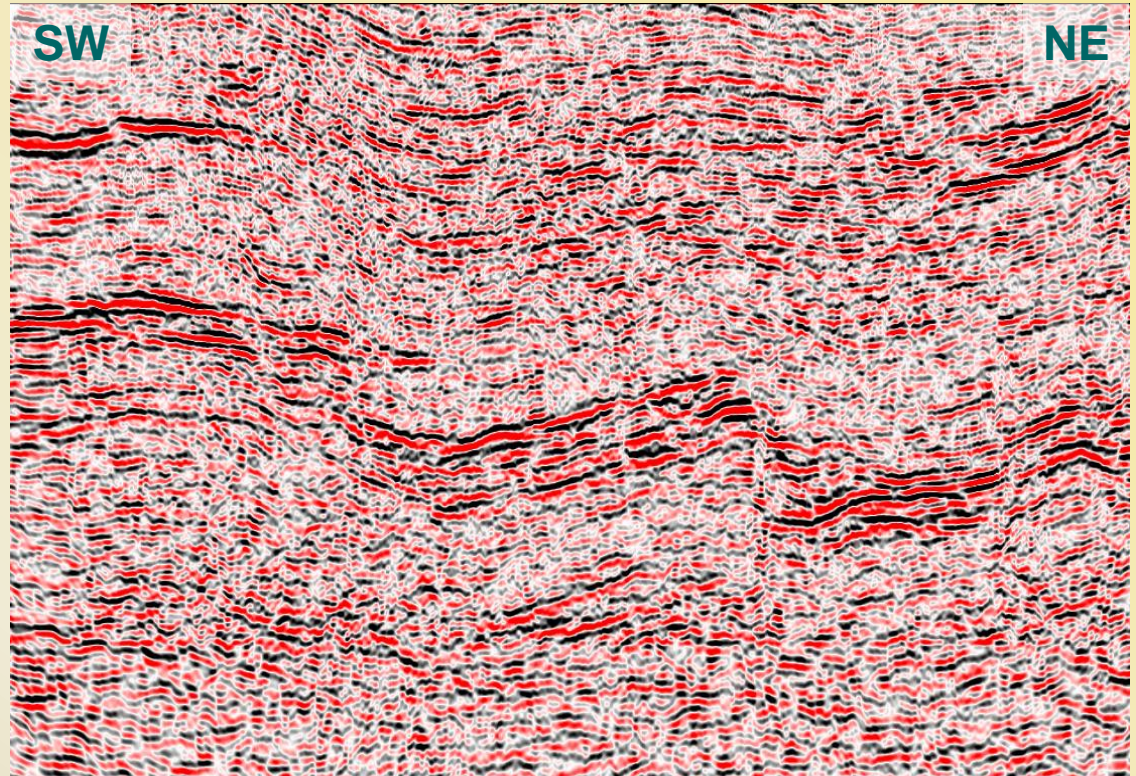
The PSA is held 50:50 by Aminex and Key Petroleum, (a 20% joint-venture partner with Aminex in the Nyuni PSA).



Tanzania, Songo Songo West - New Licence Award

Songo Songo West is highly prospective and provides excellent further potential in the Lower Cretaceous play fairway as proven by the Songo Songo gas field and the recent Kiliwani North discovery.

Aminex and Key are aiming for an early drilling programme on the licence, subject to rig availability.



**NE-SW profile across Songo Songo West PSA
(reprocessed legacy data)**



Kenya

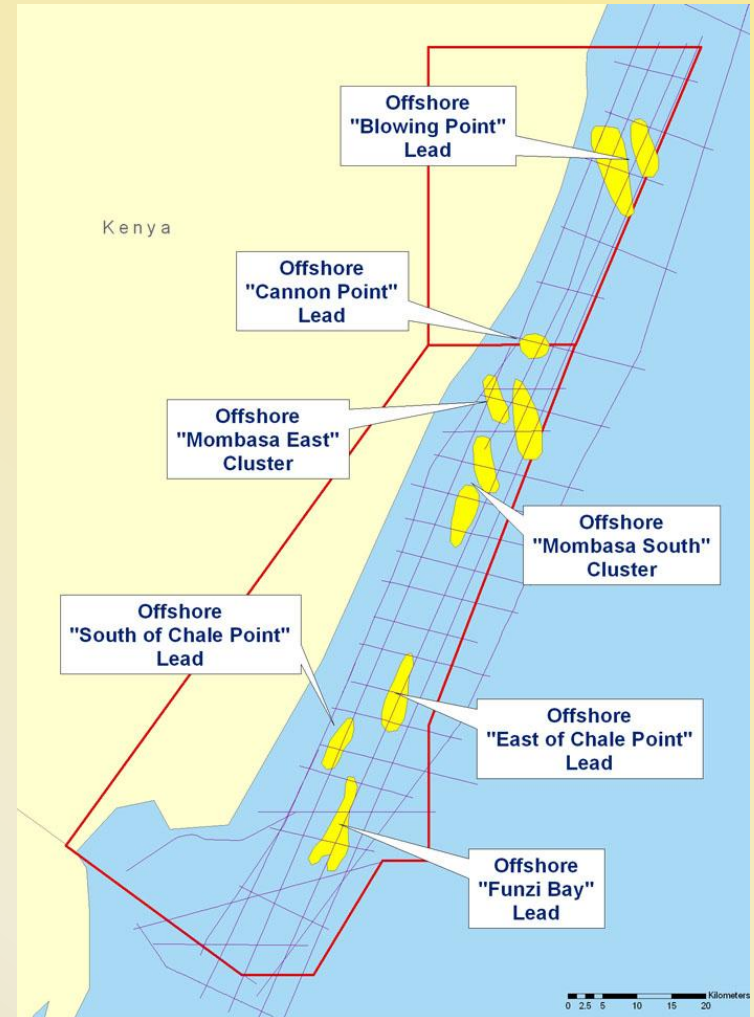
- L17 & L18 PSA exploration activity

The L17 & L18 PSAs cover 5,000 km² along the onshore and nearshore coastal margin of southern Kenya, and were granted in late 2007.

Aminex is Operator with 25%, with partners East Africa Exploration Ltd ("EAX") (40%), and SomKen Ltd (35%).

700km of 2D seismic has already been acquired, along with seabed coring, and further seismic is planned for 4Q 2008/early 2009.

There is no drilling commitment within the current exploration period.



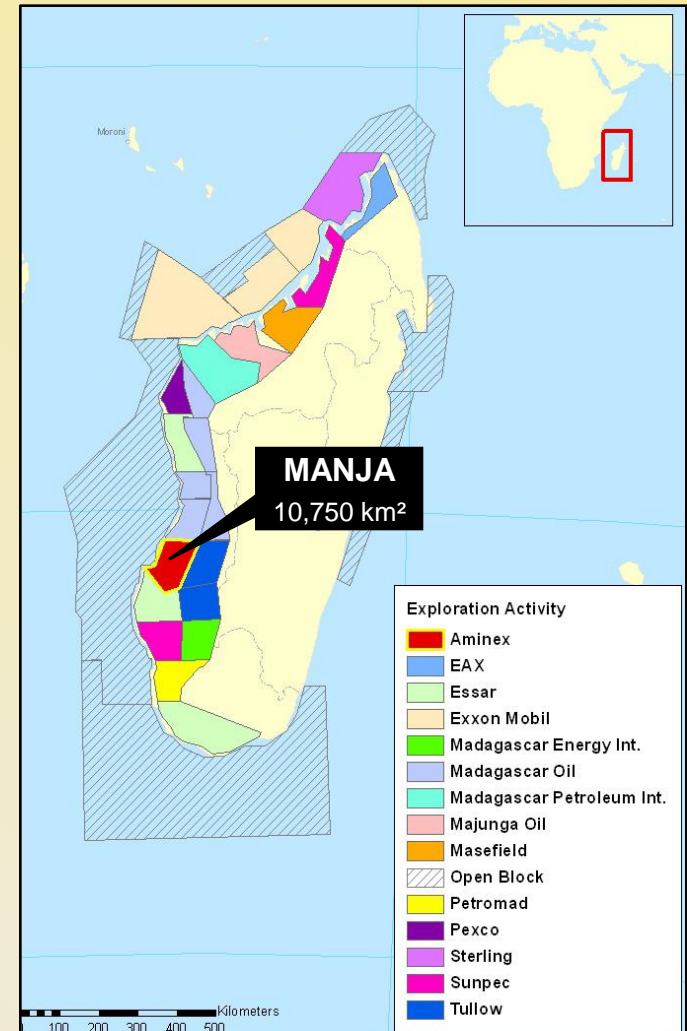
Madagascar

- Manja PSA exploration activity

The Manja PSA (Block 3108) is 10,750 km², onshore western Madagascar, in the Morondava basin.

Aminex has a 50% interest.

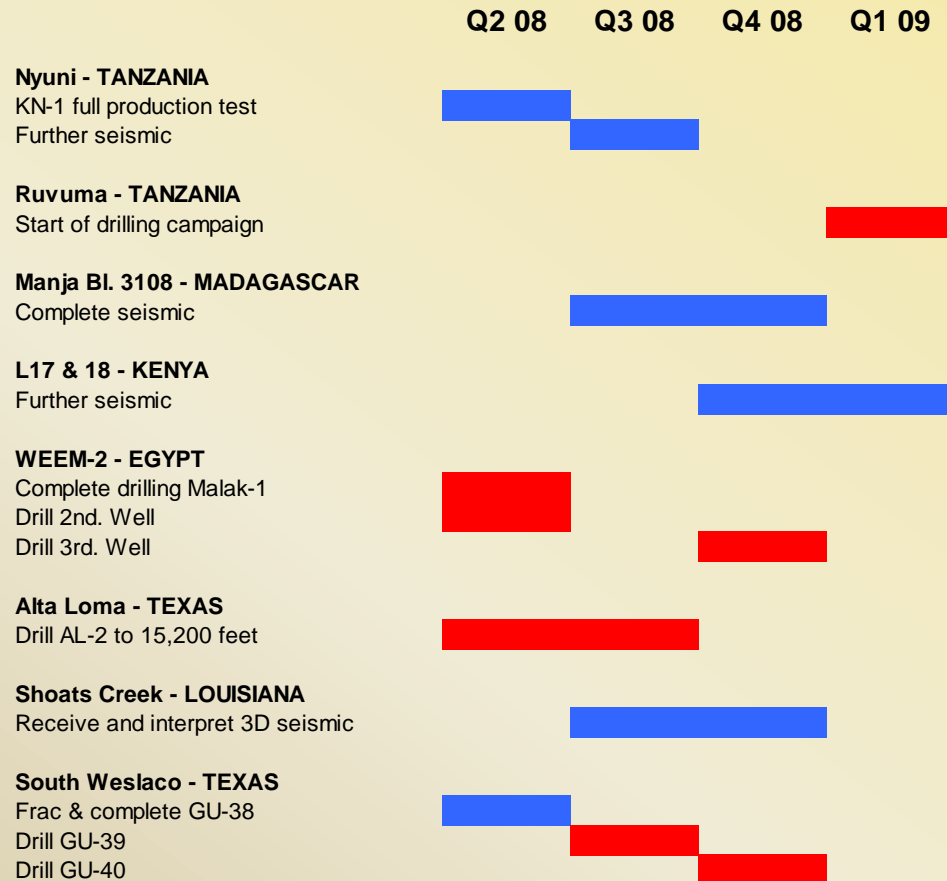
The initial work programme for acquisition of 500 km of 2D seismic is approx. 50% complete, (suspended over the wet season at end of 2007), and due to recommence shortly.





Aminex PLC

Provisional forward plan, June 2008





AGM Presentation, Dublin

Wednesday 4th June 2008